

## WELCOME COMPANY & ENVIRONMENT INTRODUCTION

Finmec has been operating in Port Hedland for 14 years and has built a reputation on the provision of high quality work in a professional and timely manner.

### About Finmec

Welcome to Finmec! We're excited to have you on board and to introduce you to our operations based around the Pilbara region. Our office and workshop facility are located on the outskirts of Port Hedland, and has been servicing our clients across the Pilbara and Kimberley areas for over 14 years.

Finmec started business in 2007 under the name EMS (Earthmoving Maintenance Solutions) and our workforce consisted of Daniel and Jess who started the company. Today we have 90 team members and counting. Finmec's expanding workforce is made-up of qualified heavy-duty diesel mechanics, light vehicle mechanics, auto-electricians, boilermakers, high voltage electricians, supervisors, apprentices and trades assistants. Our dedicated team has a fleet of modern, mine-spec, field service vehicles, giving us the ability to respond swiftly and surely.

Finmec is the trusted service provider to many companies in the area including large mining companies and small owner operators.

[www.countrycaptures.com.au](http://www.countrycaptures.com.au)

☎ 08 9173 1115

✉ [admin@finmec.com.au](mailto:admin@finmec.com.au)

🌐 [www.finmec.com.au](http://www.finmec.com.au)

📍 Lot 843 Bell Street  
Port Hedland WA 6721

Workshop



Rental



Field Service



Site Support

# WELCOME TO THE PILBARA



[www.countrycaptures.com.au](http://www.countrycaptures.com.au)

## A PLACE OF RUGGED BEAUTY

The Pilbara is an incredible place to work, with a unique and dynamic environment that offers both challenges and rewards. From the rugged terrain to the vast landscapes, the Pilbara is a place of incredible natural beauty and resource wealth. It is a place where innovation and hard work are valued, and where the pioneering spirit of Australia's early settlers still lives on.

## REWARDING

*Working in the Pilbara can be tough, but it is also incredibly rewarding. Whether you're in mining, agriculture, or any other industry, you'll be working in a place that demands hard work, dedication, and resilience. You'll be surrounded by a community of like-minded individuals who share your passion for success and your commitment to excellence.*



## RESIDENTIAL

With a warm and welcoming community, excellent facilities, and a range of recreational opportunities, the Pilbara is a great place to call home.



## FISHING & CAMPING

Whether you're interested in outdoor activities like camping and fishing, or prefer to relax and unwind with friends and family, the Pilbara has something for everyone.



## OPPORTUNITIES

The Pilbara, a major producer of iron ore, offers numerous job opportunities within the mining industry.



[www.countrycaptures.com.au](http://www.countrycaptures.com.au)



www.countrycaptures.com.au

# PORT HEDLAND TEMPS

Port Hedland can experience high levels of humidity during the summer months, which can make the heat feel even more intense.



Port Hedland is a coastal town located in the Pilbara region of Western Australia. As with most places in the Pilbara, Port Hedland experiences extremely hot temperatures during the summer months and mild temperatures during the winter months. Here is an overview of the temperatures in Port Hedland throughout the year.

## ► Hottest Months

(December - March)

During the summer months, temperatures in Port Hedland can reach as high as 45°C (113°F), with average daily temperatures ranging from 38-42°C

## ► Cooler Months

May - September)

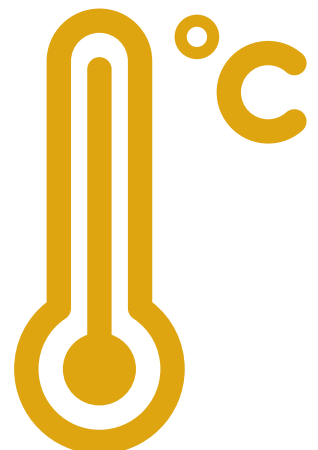
Mild, with average daily temperatures ranging from 25-28°C

## ► Cyclone Season

(November - April)

According to the Bureau of Meteorology, the Australian cyclone season officially runs from November to April.

The North West Coast, including the Pilbara Coast and Eighty Mile Beach is the most cyclone-prone region of the entire Australian coastline. On average two cyclones cross the coast each year, one of which is severe.



## PREPARING YOU FOR THE ENVIRONMENT

Working in hot and humid environments can be dangerous, and it is important to take the necessary safety precautions to prevent heat-related illnesses.

[fridgy.com.au](http://fridgy.com.au)

Employees will be educated on the signs and symptoms of heat stress and how to prevent it. This includes information on the importance of staying hydrated, taking breaks in cool areas, and wearing appropriate clothing.

### ► Monitor

Monitor employees for signs of heat stress and provide immediate medical attention if necessary. Encourage employees to report any symptoms of heat-related illnesses.

### ► Hydration

Encourage employees to drink plenty of water and provide access to cool, portable water at all times. Consider providing electrolyte replacement drinks for those who are working in extreme conditions.

### ► Acclimatise Gradually

Gradually exposing our employees to hot and humid working conditions over a period of 7-14 days, allowing their bodies to acclimate to the heat. This will include shorter work periods and more frequent breaks initially, gradually increasing exposure time and decreasing break time as employees acclimatise.

### ► Cool Areas

Finmec provide cool areas for employees to take breaks and rest, such as air-conditioned rooms and shaded areas with fans.



# OUR CULTURE



## "A WORKPLACE THAT FEELS LIKE HOME"

Finmec fosters a culture of positivity and engagement within the workplace through various means, including:



### RELATIONSHIPS

Establishing a strong relationship with customers based on our ability to provide timely support.



### COMMUNITY

Organizing local events to create a sense of community and camaraderie among the staff.



### ASSISTANCE

Providing site supervisors and leading hands to offer assistance to our personnel.



### SUPPORT

Enlisting the support of workshop supervisors and managers for breakdowns and workshop repairs.



### REWARDS

Offering a referral bonus to our employees to encourage referrals of individuals with similar calibre.





# QUALITY ASSURANCE

At Finmec, our goal is to provide exceptional services to our customers by taking a "do it right the first time" approach. We strive to meet and exceed their expectations in terms of quality, cost, and schedule.



*Finmec ensures quality of service through utilisation of professional qualified trades personnel who are involved in ongoing post trade training including health & safety and technical training associated with advancements in technology.*

We have a highly skilled team of trades personnel based out of our Port Hedland workshop, along with our management and administration teams based in both Port Hedland and Perth offices. We pride ourselves on having a mixed workforce of residential and FIFO employees, which allows us to cater to your needs with flexible rosters and working hours.

We take quality seriously at Finmec, and we utilise pre and post work inspection sheets to ensure we meet our customers' quality expectations. These tools also help us to control the level of service and quality we provide to our clients, making us stand out from our competitors.

Our company is well managed, and we offer high-quality management and supervision across all operations to ensure we exceed our clients' expectations. You can trust that we provide excellent support to our trades personnel to ensure we deliver the best possible service to our clients. We look forward to working with you and helping you grow with us at Finmec.

☎ 08 9173 1115

✉ admin@finmec.com.au

🌐 www.finmec.com.au

📍 Lot 843 Bell Street  
Port Hedland WA 6721

Workshop



Rental



Field Service



Site Support

# HANDY CONTACTS



## "SUPPORTING LOCAL BUSINESSES BUILDS A VIBRANT COMMUNITY!"

If you're on the hunt for a great haircut, some fishing gear, or a delicious meal, look no further than these fantastic local establishments.



### LOCAL BARBERS

Hijacked Barbers  
Makaveli Barber Shop  
Hedland Beard & Shears



### HEALTH & WELLNESS

The Glow Spot - Infrared Sauna  
Port Hedland Leisure  
Hedland Well Women's Centre  
Country Chiropractic South Hedland



### RESTAURANTS

The Esplanade Hotel Port Hedland  
Providore Cafe  
Raikas Family Restaurant  
The Walkabout Hotel



### FISHING STORE

Smirkey's Sports  
Spooled Out Australia Pty Ltd  
Seven Four Seven Supplies  
Port Hedland Game Fishing Club



### CAMPING

Eighty Mile Beach  
Cape Keraudren Coastal Reserve  
Karijini National Park  
Point Samson





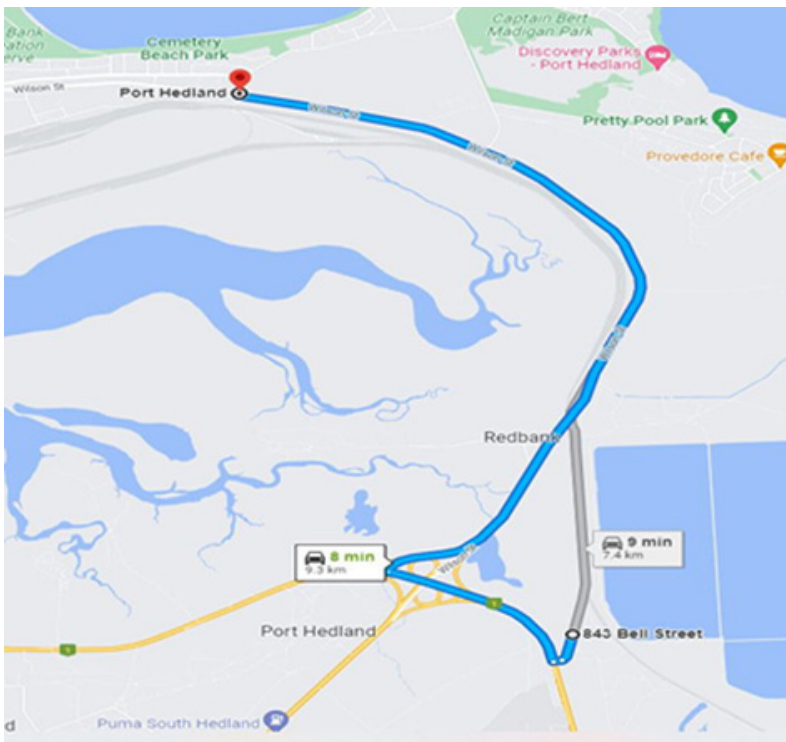
## WORKSHOP LOCATION

At Finmec, all support is supplied out of our workshop in Port Hedland.

Distance from Finmec to locations:

Port Hedland: 9.3 km

Newman: 447 km



☎ 08 9173 1115

✉ [admin@finmec.com.au](mailto:admin@finmec.com.au)

🌐 [www.finmec.com.au](http://www.finmec.com.au)

📍 Lot 843 Bell Street  
Port Hedland WA 6721

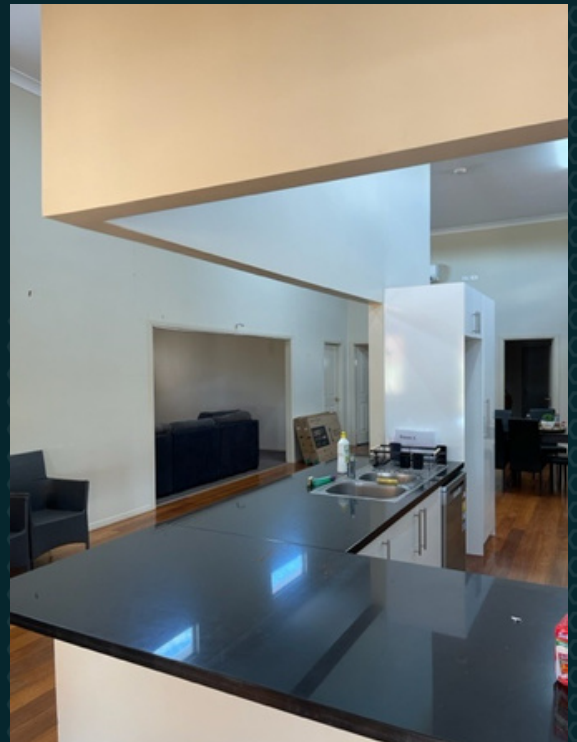
Workshop  Rental  Field Service  Site Support





## **FIFO INFORMATION**

We are excited to have you on board and look forward to working with you. As you prepare for your first day, we want to provide you with some information about our company's accommodations and logistics.



**Workshop FIFO Employees Housing.**

# FINMEC™



The most commonly used camp is Port Haven, located at 2444 Great Northern Hwy, Port Hedland WA 6721. Occasionally, you may be required to stay at ESS Gateway at Lot 901 Nimingarra Ct, South Hedland WA 6722, or Club Hamilton at 77/95 Hamilton Rd, South Hedland WA 6722. In addition, we have FIFO Houses located at 7 & 7A Councillor Road, Boodarie, and 14 Centaur Ave, South Hedland.

Our administration team members will collect you from the airport if you arrive during working hours. If you arrive after hours, a vehicle with a company airport card will be left for you to use. On your first day, our Mobilisation & Site Support Administrator, Renee, will collect you and bring you to the yard for induction.

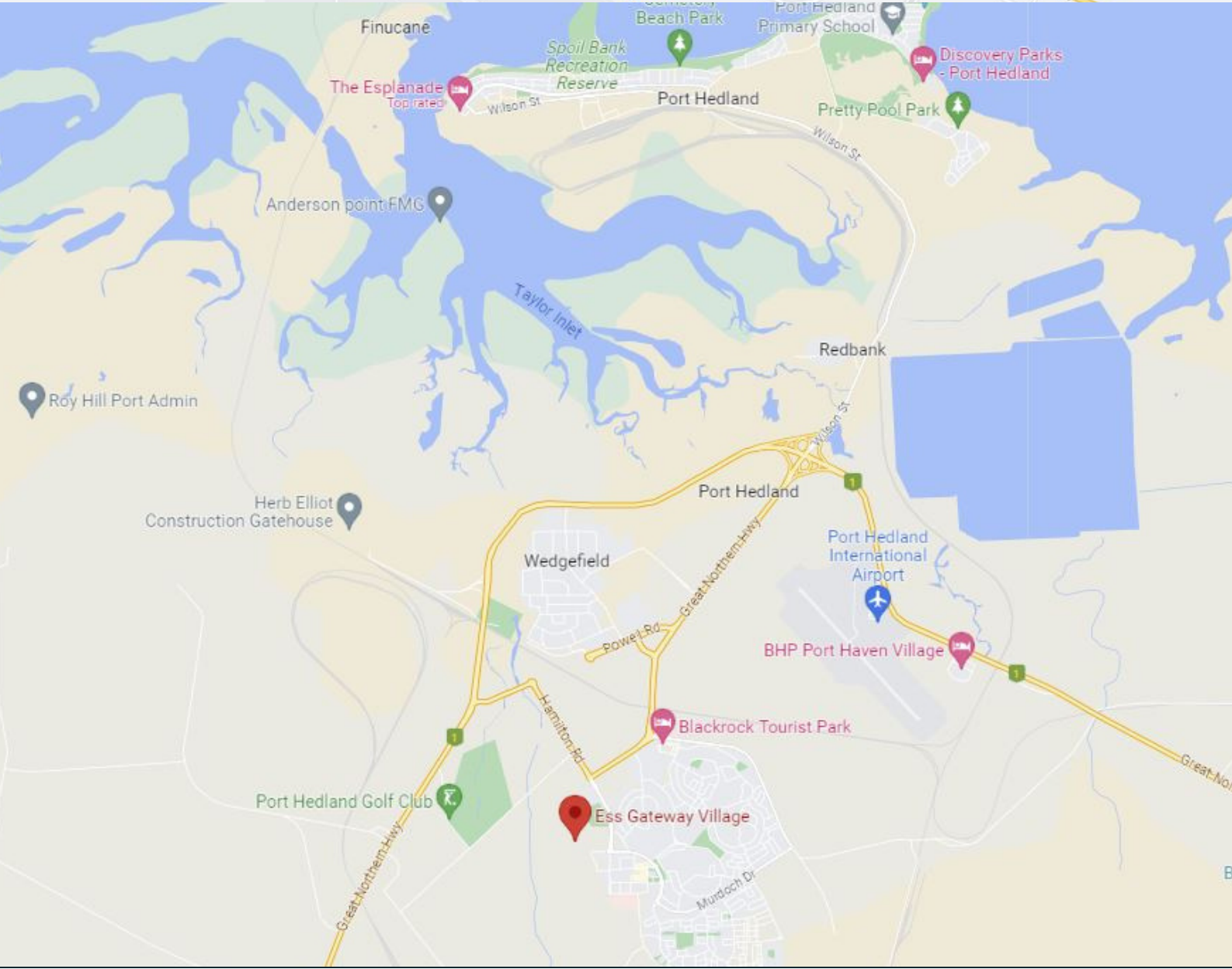
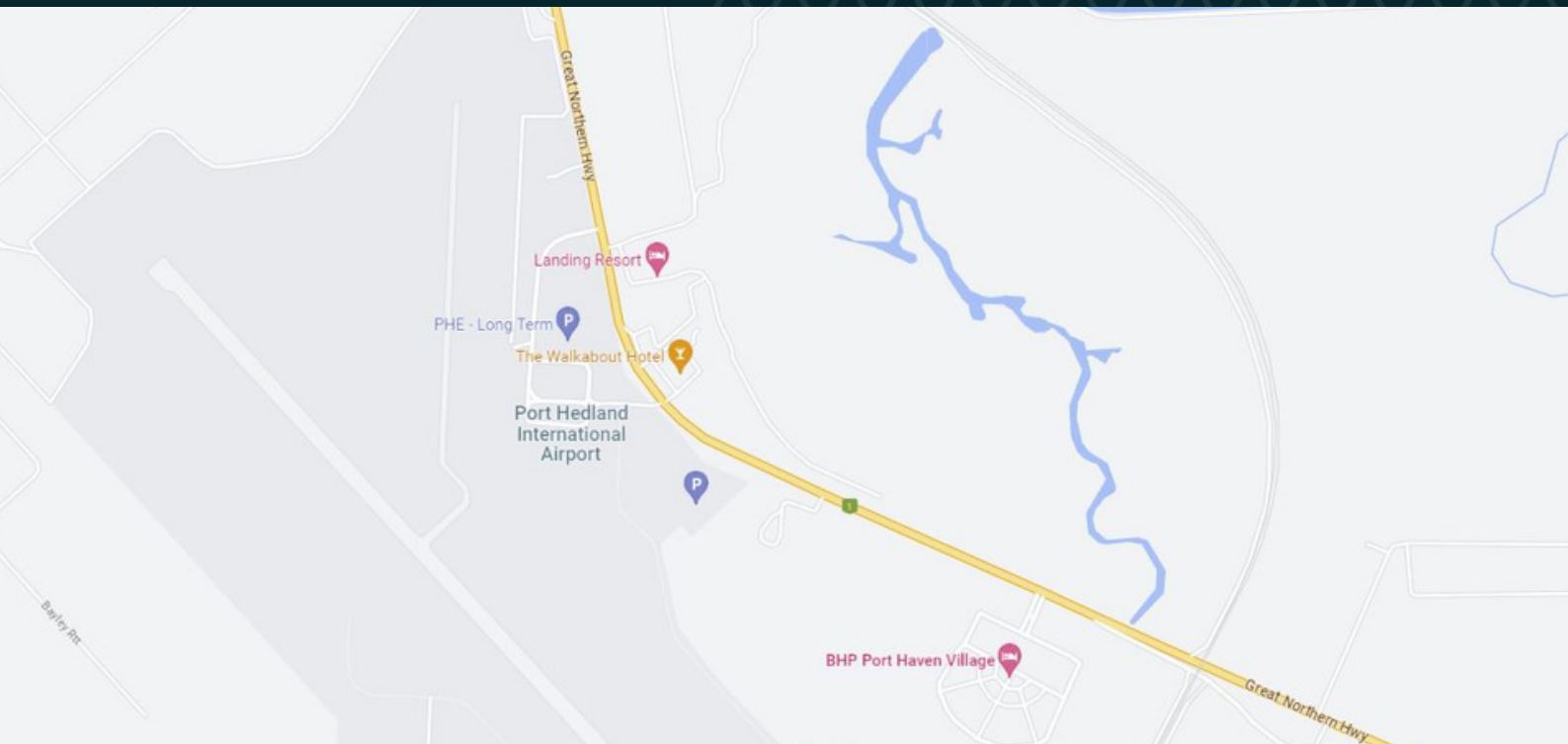
## **Workshop Employees**

We provide meal allowances, linen, and weekly cleaning services, including changing all bedding. A full set of work clothes, including four shirts, four pants, and one pair of boots, will be provided on your first day. Please note that we do not offer laundry services, but the house has a laundry for you to use. Employees in the yard are allocated a vehicle to use.

Your accommodation will depend on your role. Mobile employees are issued cars by the department and use them to go between camp and site. For roles that are fixed to one work site, buses go daily morning and night between camp and each site. If you stay in the FIFO house, you will receive a daily meal allowance to buy food. The allocated amount goes into your pay each fortnight.

We hope this information provides you with a better understanding of our accommodations and logistics. If you have any further questions, please do not hesitate to reach out to us. We look forward to working with you and wish you all the best in your new role!

# Area Maps



# FINMEC™



## THANK YOU FOR READING

We are thrilled to have you joining our team and can't wait to see all the amazing things you will bring to the table. We know that starting a new job can be overwhelming, but rest assured that we will be here every step of the way to support you and help you succeed. We believe that you will play a vital role in our organisation's growth and success, and we are excited to embark on this journey together. Once again, welcome aboard, and we look forward to working with you!

☎ 08 9173 1115

✉ [admin@finmec.com.au](mailto:admin@finmec.com.au)

🌐 [www.finmec.com.au](http://www.finmec.com.au)

📍 Lot 843 Bell Street  
Port Hedland WA 6721

Workshop  Rental  Field Service  Site Support